



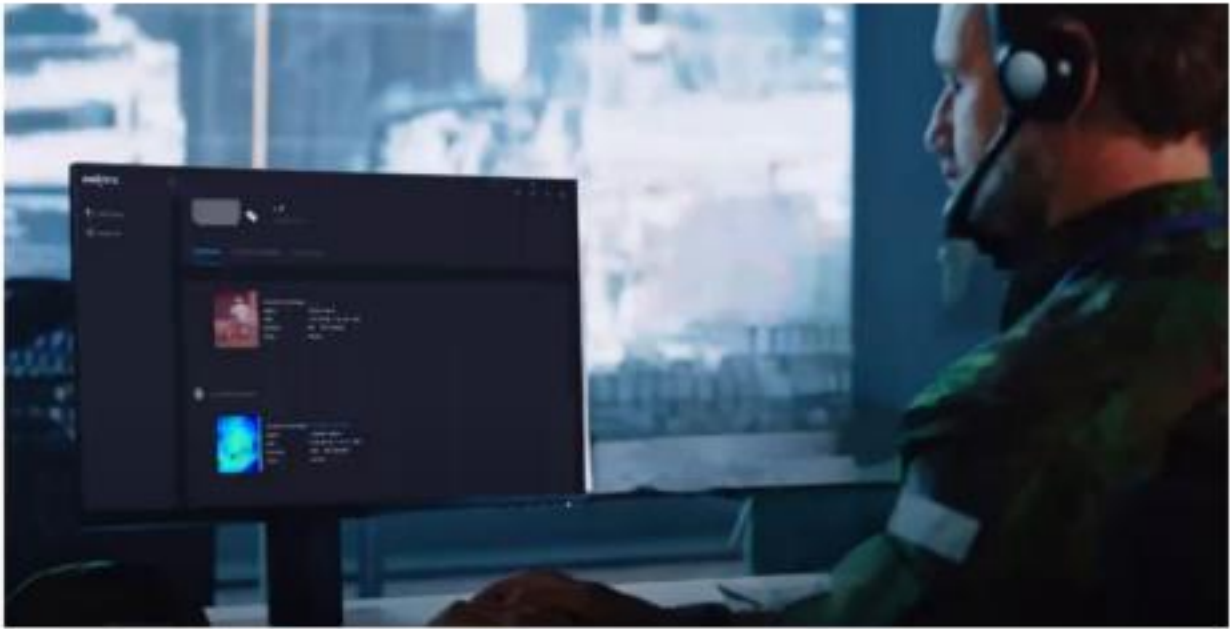
# CENTRAL

## Management and Analysis System

CENTRAL is a software designed for real-time analysis, monitoring, and management of GSM-based trail cameras/camera traps, HUB and SOLO. It addresses critical issues like border security, immigration, and wildlife monitoring by providing real-time information with a low false alarm rate. Utilizing Artificial Intelligence, CENTRAL accurately identifies objects such as humans, vehicles, and animals, sending detections instantly via web and mobile apps. It offers a unified platform for easy device management, reducing human related errors and delays through automated monitoring and alerts. CENTRAL supports both on-premises and cloud-based infrastructures, enhancing operational efficiency and reliability.

## USE CASES

- Border Security
- Coast, Shore Security
- Anti-Terrorism Activities • Critical Facility Security • Military Base Protection
- Illegal Immigration Control • Immigration Control
- Anti-Smuggling
- Wildlife Monitoring

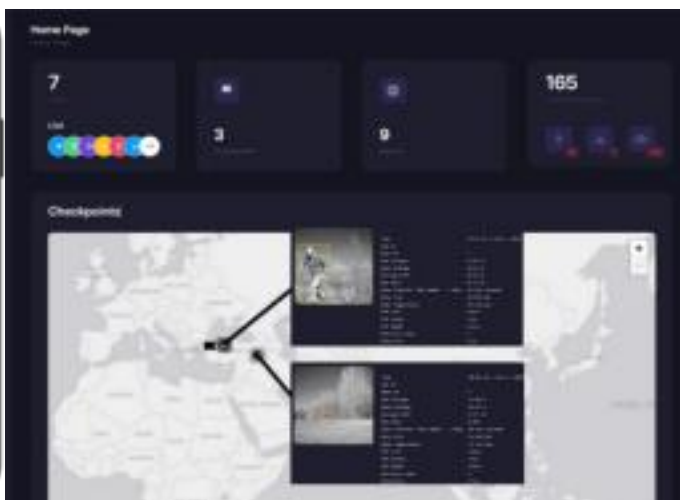
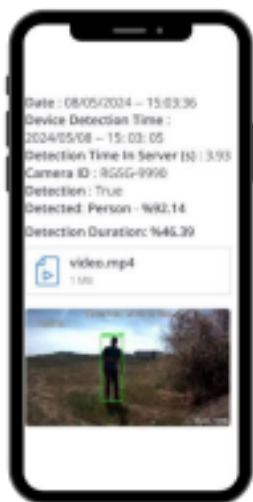


RobotEye

Proprietary Copyright © All Rights Reserved RobotEye Artificial Intelligence Systems info@roboteye.ai / www.roboteye.ai



Stay connected and informed with a multi-platform management system, delivering real-time alerts to both mobile and desktop devices.



Web Interface

Mobile Application

## AI ANALYSIS

Transform your operations with CENTRAL, which performs analysis directly on the server. CENTRAL

analyzes images and video clips, whereas the analysis of video streams is performed upon request. This advanced feature is vital for detecting objects and threats, playing a crucial

role in enhancing border security, controlling immigration, and monitoring wildlife.

<sup>1</sup>Service is provided for an additional fee.

**COMMAND & CONTROL**

CENTRAL provides advanced capabilities for user and device management. Developed to streamline operations, it ensures seamless integration and efficient control of all connected devices. CENTRAL facilitates the simultaneous acquisition of detection information from multiple devices, offering enhanced real-time monitoring. CENTRAL's support for user units allows for scalable and organized management of user groups, ensuring smooth and efficient workflows.

**SUPPORTED CAMERAS AND DEVICES**

CENTRAL can connect to an unlimited number of GSM-based trail cameras/camera traps, offering extensive monitoring capabilities. By integrating the products of the RobotEye family, it ensures comprehensive

surveillance and monitoring.

**ENTERPRISE USAGE**

Type	License	Pricing	Data Center
On-Prem	Annual	Pay per device <sup>2</sup>	Customer data center (Servers are not included.)
Cloud	Annual	Pay per device	Cloud data center

<sup>2</sup>Minimum number of devices must be reached.